

SHORT TERM IT JOB TRENDS	Connecticut	●
	Massachusetts	●
	New York Metro	▲
	National	▲

The IT job market in Connecticut improved slightly in June. Employers began posting more jobs after taking a break over the past two months. Depending on further

developments this summer the recent drop in available job opportunities may be temporary. Last month, employers posted a daily average of 650 job openings for IT professionals. This is 3.2% more than in May. The actual fallout of the recent announcements of General Electric and United Technologies are still unclear as it will shape up over the next year. We expect the IT job market to continue to be under pressure.

As expected, employers in Financial Services kept removing job opportunities. Specifically Banking and Insurance companies slowed demand. Employers in Healthcare and HiTech posted more job openings than before lifting the market.

The national IT labor demand average remained virtually unchanged (up 0.2%);

Table 1: IT Job Openings, Connecticut*

Jun 15	May 15	Apr 15	Jun 14	Jun 13
650	620	710	720	570

Fig.1: IT Open Positions, Connecticut*

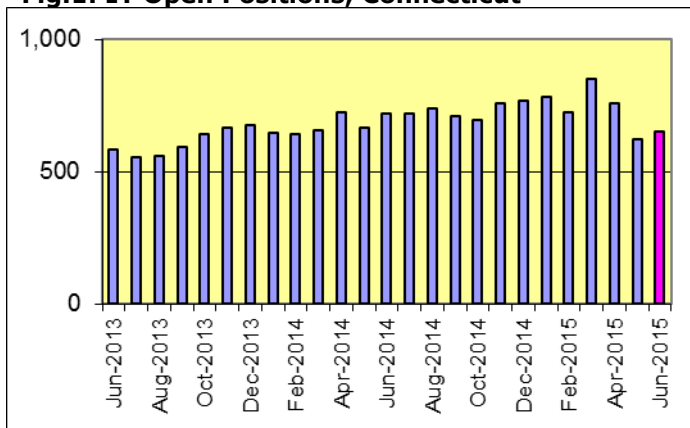


Table 2: IT Job Opening Estimates by Category*

	Jun 15	Jun 14
Total IT Job Market	650	720
IT Architects/Consultants	150	110
Software Development	140	130
IT Management	120	210
Systems Eng./Support	120	160
Systems Administration	50	30
IT Sales and Marketing	40	30
Business/Process Design	20	20
Misc.IT Job Categories	10	20

Table 3: Top 15 Needed Skills (Job Openings*)

	Jun 15	Jun 14
SQL	200	190
Business Analysis	190	210
Oracle DBMS	150	160
Large system technologies	110	160
Java	110	140
Unix	110	100
Linux	90	90
Microsoft SQL Server	90	100
Web Services	80	70
Windows OS	80	110
C++/VC++	70	90
Mainframe	70	90
ETL	60	60
C#	60	50
Offshore team coordination	60	110



CT Technology Council
222 Pitkin St., Suite 113 East Hartford, CT 06108
phone: (860) 289 - 0878
web: <http://www.ct.org>

*) Estimated monthly averages are based on actual count of job openings.

METHODOLOGY

SkillPROOF surveys the inventories of job openings at large, regional and nationwide direct employers. Job openings are counted and verified every 24 hours. All data sources have been verified for timely removal of filled or closed positions. No data from job boards or search firms are included.

For this report SkillPROOF estimates the counts of job openings. Estimates are calculated directly from SkillPROOF's actual daily counts of job openings. As a base for its calculations, SkillPROOF uses data and findings from reports of the Bureau of Labor Statistics (BLS) <http://www.bls.gov>.



KRAZOOM Inc.
510 Barnum Ave, Suite 402 • Bridgeport, CT 06608
phone: (917) 463 - 3941 • fax: (815) 642-8694
web: <http://www.krazoom.com>