

<b>SHORT TERM IT JOB TRENDS</b>	<b>Connecticut</b>	●
	<b>Massachusetts</b>	▲
	<b>New York Metro</b>	●
	<b>National</b>	●

Labor demand for IT professionals dropped slightly last month in Connecticut. Employers with need for IT talent posted a daily average of 710 job openings which is 4.1%

less than in August. Connecticut's IT job market is still trying to grow up with the past economic downturn still impacting the local work force. Nevertheless, in September the average number of daily posted IT job openings was 20.3% higher than in September 2013. It confirms the positive trend but growth is still very slow.

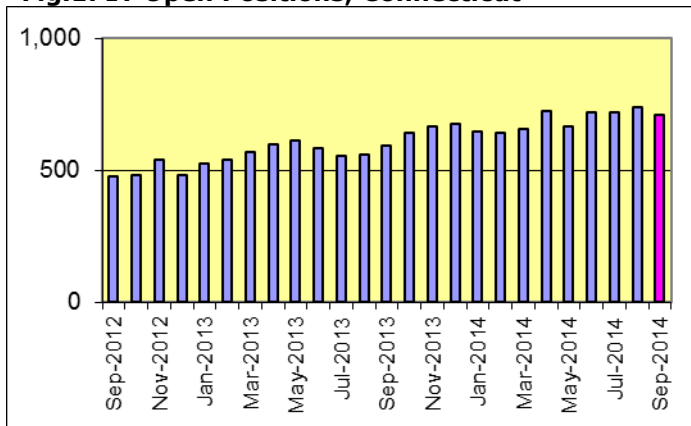
Employers in Financial Services and Banking shed the most job openings in September while Insurance companies made no changes. Healthcare, HiTech IT Service providers increased their openings slightly.

The national average of IT labor demand remained unchanged in September.

**Table 1: IT Job Openings, Connecticut\***

Sep 14	Aug 14	Jul 14	Sep 13	Sep 12
710	740	720	590	480

**Fig.1: IT Open Positions, Connecticut\***



**Table 2: IT Job Opening Estimates by Category\***

	Sep 14	Sep 13
Total IT Job Market	710	590
IT Management	200	110
IT Architects/Consultants	140	140
Software Development	120	150
Systems Eng./Support	120	100
Systems Administration	40	40
IT Sales and Marketing	30	30
Business/Process Design	20	20
Misc.IT Job Categories	30	20

**Table 3: Top 15 Needed Skills (Job Openings\*)**

	Sep 14	Sep 13
SQL	200	140
Business Analysis	200	180
Oracle DBMS	160	110
Java	140	140
Unix	110	70
Large system technologies	110	140
Windows OS	100	70
Flash	100	120
Linux	90	70
Offshore team coordination	90	60
Web Services	80	50
SOA (Service Oriented Architecture)	80	50
XML	70	60
Microsoft SQL Server	70	80
ETL	70	40



**CT Technology Council**  
222 Pitkin St., Suite 113 East Hartford, CT 06108  
phone: (860) 289 - 0878  
web: <http://www.ct.org>

\*) Estimated monthly averages are based on actual count of job openings.

**METHODOLOGY**

SkillPROOF surveys the inventories of job openings at large, regional and nationwide direct employers. Job openings are counted and verified every 24 hours. All data sources have been verified for timely removal of filled or closed positions. No data from job boards or search firms are included.

For this report SkillPROOF estimates the counts of job openings. Estimates are calculated directly from SkillPROOF's actual daily counts of job openings. As a base for its calculations, SkillPROOF uses data and findings from reports of the Bureau of Labor Statistics (BLS) <http://www.bls.gov>.



**SkillPROOF Inc.**  
510 Barnum Ave, Suite 402 • Bridgeport, CT 06608  
phone: (917) 463 - 3941 • fax: (815) 642-8694  
web: <http://www.skillproof.com>