

**SHORT
TERM
IT JOB
TRENDS**

Connecticut ●
Massachusetts ▲
New York Metro ●
National ▲

The Connecticut IT job market expanded slightly in August. Employers posted a daily average of 740 job openings for IT professionals who are looking for employment in the state. This

is 2.8% more than compared to July. Over the summer the job market was flat but now we are seeing signs of improvement going into the fall. General employment in the state has consistently increased month over month since the beginning of the year even though Connecticut's recovery is still lagging behind other states trying to catch up since the last recession ended.

In August, the change in job market participation among the different industries was mixed. While employers in Healthcare, Financial Services and Insurance posted more openings, IT Services and HiTech employers posted fewer opportunities.

The national average gained 4.6% in August.

Table 1: IT Job Openings, Connecticut*

Aug 14	Jul 14	Jun 14	Aug 13	Aug 12
740	720	720	560	530

Fig.1: IT Open Positions, Connecticut*

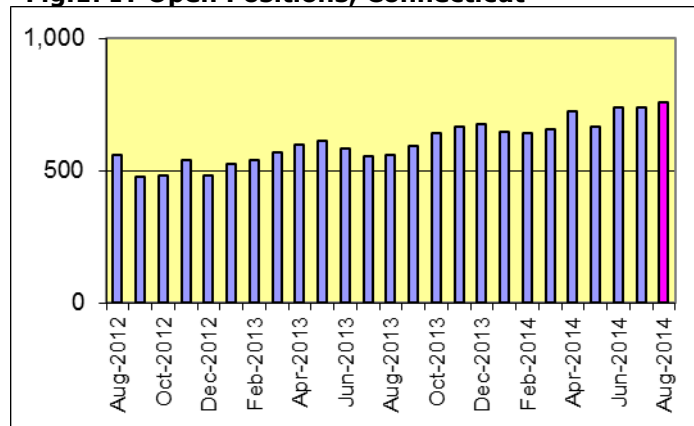


Table 2: IT Job Opening Estimates by Category*

	Aug 14	Aug 13
Total IT Job Market	740	560
IT Management	230	100
Software Development	130	130
Systems Eng./Support	130	90
IT Architects/Consultants	130	150
Systems Administration	40	40
IT Sales and Marketing	30	30
Business/Process Design	30	10
Misc.IT Job Categories	20	10

Table 3: Top 15 Needed Skills (Job Openings*)

	Aug 14	Aug 13
SQL	200	130
Business Analysis	200	180
Oracle DBMS	150	120
Java	140	120
Large system technologies	130	130
Windows OS	110	70
Linux	100	70
Unix	100	80
Offshore team coordination	90	60
Flash	90	110
SOA (Service Oriented Architecture)	80	40
Web Services	70	50
XML	70	50
Microsoft SQL Server	70	70
Mainframe	70	80



CT Technology Council
222 Pitkin St., Suite 113 East Hartford, CT 06108
phone: (860) 289 - 0878
web: <http://www.ct.org>

*) Estimated monthly averages are based on actual count of job openings.

METHODOLOGY

SkillPROOF surveys the inventories of job openings at large, regional and nationwide direct employers. Job openings are counted and verified every 24 hours. All data sources have been verified for timely removal of filled or closed positions. No data from job boards or search firms are included.

For this report SkillPROOF estimates the counts of job openings. Estimates are calculated directly from SkillPROOF's actual daily counts of job openings. As a base for its calculations, SkillPROOF uses data and findings from reports of the Bureau of Labor Statistics (BLS) <http://www.bls.gov>.