

**SHORT
TERM
IT JOB
TRENDS**

Connecticut ▲
Massachusetts ▲
New York Metro ○
National ▲

IT labor demand returned to the level in April over the past 30 days. Employers increased their posted opportunities for IT professionals by 9.1%. This resulted in a daily average of 720

job openings. The IT job market is slowly making some progress showing a positive trend since last year. The turning point was the Fall of 2012. Since then job openings in technology have been on the rise with some back and forth. While all of this is encouraging the recovery is in slow motion. Much more needs to happen to return to past levels of labor demand for technologists in order to feel “normal”.

The number of job postings from most industries edged up last month. Employers in Insurance, HiTech and IT Services posted more opportunities. We recorded fewer openings in Healthcare and Financial Services. Nevertheless, this is encouraging given the summer season.

The national average increased 1.7% in June.

Table 1: IT Job Openings, Connecticut*

Jun 14	May 14	Apr 14	Jun 13	Jun 12
720	660	720	580	630

Fig.1: IT Open Positions, Connecticut*

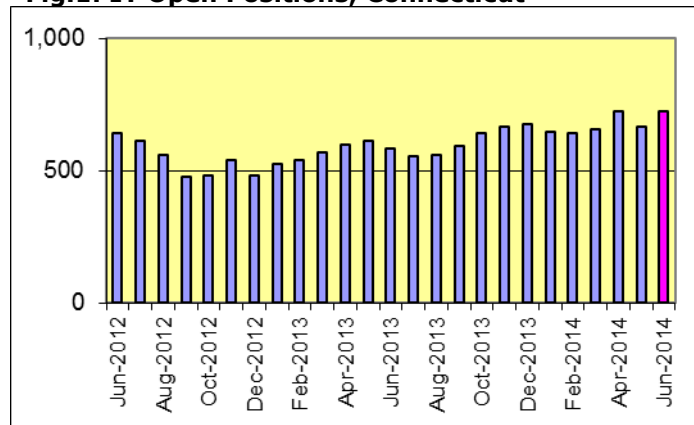


Table 2: IT Job Opening Estimates by Category*

	Jun 14	Jun 13
Total IT Job Market	720	580
IT Management	210	90
Systems Eng./Support	160	130
Software Development	130	100
IT Architects/Consultants	110	140
Systems Administration	30	50
IT Sales and Marketing	30	50
Business/Process Design	20	20
Training/Tech Writing	10	10

Table 3: Top 15 Needed Skills (Job Openings*)

	Jun 14	Jun 13
Business Analysis	210	170
SQL	190	150
Oracle DBMS	160	120
Large system technologies	160	140
Java	140	100
Offshore team coordination	110	60
Windows OS	110	100
Microsoft SQL Server	100	70
Unix	100	90
C++/VC++	90	70
Linux	90	80
Mainframe	90	80
XML	80	60
Web Services	70	60
SOA (Service Oriented Architecture)	60	40



CT Technology Council
222 Pitkin St., Suite 113 East Hartford, CT 06108
phone: (860) 289 - 0878
web: <http://www.ct.org>

*) Estimated monthly averages are based on actual count of job openings.

METHODOLOGY

SkillPROOF surveys the inventories of job openings at large, regional and nationwide direct employers. Job openings are counted and verified every 24 hours. All data sources have been verified for timely removal of filled or closed positions. No data from job boards or search firms are included.

For this report SkillPROOF estimates the counts of job openings. Estimates are calculated directly from SkillPROOF's actual daily counts of job openings. As a base for its calculations, SkillPROOF uses data and findings from reports of the Bureau of Labor Statistics (BLS) <http://www.bls.gov>.