

SHORT TERM IT JOB TRENDS	Connecticut	●
	Massachusetts	●
	New York Metro	●
	National	↓

Finally! The IT job market in Connecticut is growing. In April, employers increased their labor demand for IT professionals in the state by 13.2%. This is a healthy rate which can infuse some life into the local technology job market. The season has several weeks left where employers typically expand their posted employment opportunities. By mid June but latest in July the summer is likely to slow growth.

Healthcare and IT Services were the industry sectors driving much of the growth for IT talent last month. Other industries with increased interest included HiTech and Insurance.

Table 1: IT Job Openings, Connecticut*

Apr 13	Mar 13	Feb 12	Apr 12	Apr 11
600	530	530	730	1030

Job postings with workplace in the New York Metro area continued to increase. Employers posted 8.3% more opportunities in April than in March. The Big Apple is still 10.3% below IT labor demand in April 2012. The national IT job market average increased 1.3%.

Fig.1: IT Open Positions, Connecticut*

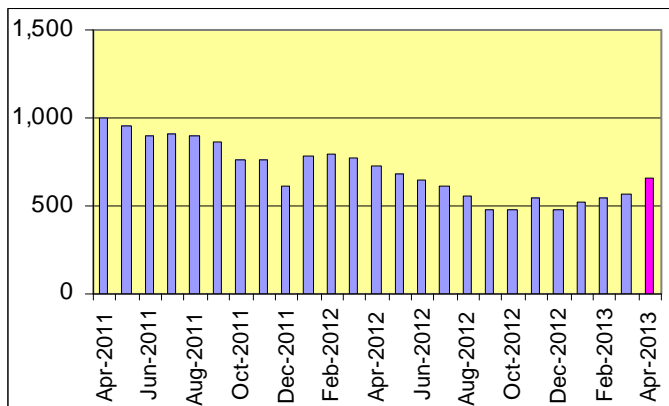


Table 2: IT Job Opening Estimates by Category*

	Apr 13	Apr 12
Total IT Job Market	600	730
IT Architects/Consultants	150	170
Systems Eng./Support	140	140
IT Management	110	200
Software Development	110	120
Systems Administration	30	50
IT Sales and Marketing	30	20
Business/Process Design	10	20
Misc.IT Job Categories	10	10

Table 3: Top 15 Needed Skills (Job Openings*)

	Apr 13	Apr 12
Business Analysis	180	200
SQL	160	140
Oracle DBMS	110	80
Large system technologies	110	140
Windows OS	110	110
Java	100	100
Offshore team coordination	100	40
Flash	100	0
Mainframe	80	70
Unix	80	70
C++/VC++	70	80
Linux	70	80
DB2 (IBM)	60	50
Web Services	60	50
XML	50	80



CT Technology Council
222 Pitkin St., Suite 113 East Hartford, CT 06108
phone: (860) 289 - 0878
web: <http://www.ct.org>

*) Estimated monthly averages are based on actual count of job openings.

METHODOLOGY

SkillPROOF surveys the inventories of job openings at large, regional and nationwide direct employers. Job openings are counted and verified every 24 hours. All data sources have been verified for timely removal of filled or closed positions. No data from job boards or search firms are included.

For this report SkillPROOF estimates the counts of job openings. Estimates are calculated directly from SkillPROOF's actual daily counts of job openings. As a base for its calculations, SkillPROOF uses data and findings from reports of the Bureau of Labor Statistics (BLS) <http://www.bls.gov>.



SkillPROOF Inc.
510 Barnum Ave, Suite 402 • Bridgeport, CT 06608
phone: (917) 463 - 3941 • fax: (815) 642-8694
web: <http://www.skillproof.com>