

SHORT TERM IT JOB TRENDS	Connecticut	●
	Massachusetts	●
	New York Metro	●
	National	↓

The sluggishness of the IT job market in Connecticut is not receding. Employers posted just 1.9% more job openings for technology professionals in February as compared to January. Compared with a year ago, labor demand is down over 30%. It feels like employers are in maintenance mode. This suggests that the tepid growth of the economy is still weighing on employers who don't want to commit themselves to additional staff at this time. While there is much activity among startup minded individuals in the state it remains to be seen whether this leads to more job opportunities. Even with funding, startups often don't survive releasing the hired talent again.

While employers in HiTech and Insurance stepped back from the job market last month, opportunities in Healthcare and Financial Services were more frequent than in January. Job openings in Healthcare are recovering after hitting a low last October.

Table 1: IT Job Openings, Connecticut*

Feb 13	Jan 13	Dec 12	Feb 12	Feb 11
530	520	490	800	970

The New York Metro area improved (up 6.1%) while job opportunities in Massachusetts declined 4.2%. The national average lost 4.5%.

Fig.1: IT Open Positions, Connecticut*

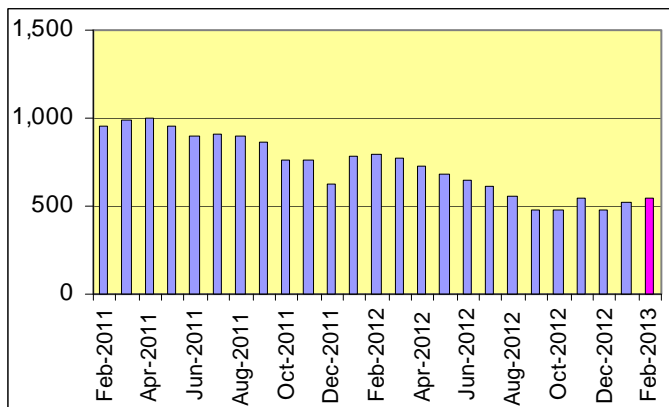


Table 2: IT Job Opening Estimates by Category*

	Feb 13	Feb 12
Total IT Job Market	530	800
IT Architects/Consultants	120	190
Software Development	110	120
Systems Eng./Support	110	140
IT Management	100	200
IT Sales and Marketing	30	10
Systems Administration	20	50
Business/Process Design	20	60
Training/Tech Writing	10	10
Misc. IT Job Categories	20	10

Table 3: Top 15 Needed Skills (Job Openings*)

	Feb 13	Feb 12
Business Analysis	180	230
SQL	150	180
Java	120	90
Oracle DBMS	110	120
Windows OS	80	110
Large system technologies	80	170
Microsoft SQL Server	70	110
Offshore team coordination	70	40
C++/VC++	70	50
Unix	60	60
XML	50	70
DB2 (IBM)	50	70
C#	50	30
Mainframe	50	90
ITIL (IT Infrastructure Library)	50	40



CT Technology Council
222 Pitkin St., Suite 113 East Hartford, CT 06108
phone: (860) 289 - 0878
web: <http://www.ct.org>

*) Estimated monthly averages are based on actual count of job openings.

METHODOLOGY

SkillPROOF surveys the inventories of job openings at large, regional and nationwide direct employers. Job openings are counted and verified every 24 hours. All data sources have been verified for timely removal of filled or closed positions. No data from job boards or search firms are included.

For this report SkillPROOF estimates the counts of job openings. Estimates are calculated directly from SkillPROOF's actual daily counts of job openings. As a base for its calculations, SkillPROOF uses data and findings from reports of the Bureau of Labor Statistics (BLS) <http://www.bls.gov>.



SkillPROOF Inc.
510 Barnum Ave, Suite 402 • Bridgeport, CT 06608
phone: (917) 463 - 3941 • fax: (815) 642-8694
web: <http://www.skillproof.com>