

SHORT TERM IT JOB TRENDS

- Connecticut ●
- Massachusetts ●
- New York Metro ▲
- National ●

The IT job market in the state continued to grow in May. Expansion was slow though and employers added just a few more openings to their inventory. Hiring managers remain cautious about their needs for IT professionals. Overall, the number of posted IT work opportunities increased 3.3% bringing the level of daily job postings to 620 in Connecticut. The additional job openings were posted for professionals in IT Sales and Marketing, IT Management and Systems Administration.

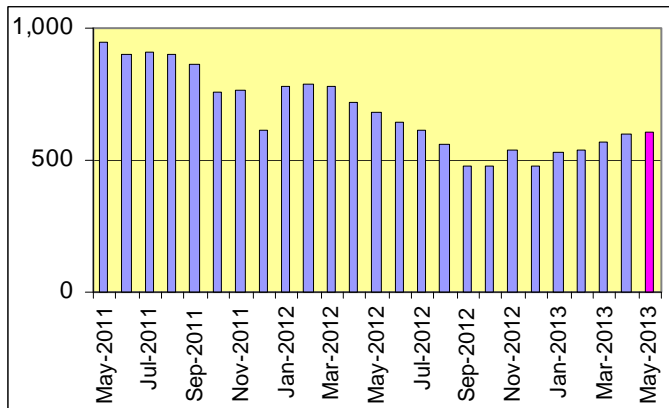
All industries tracked by this report improved or maintained their level of need for hires. The only exception was the healthcare sector where employers posted fewer openings in May than in April. This industry had increasing needs for 7 months before May. Now it seems that employers may want to digest the inflow of resumes to fill open positions.

Table 1: IT Job Openings, Connecticut*

May 13	Apr 13	Mar 12	May 12	May 11
620	600	530	640	920

The need for IT professionals in the New York Metro area fell slightly in May. Employer posted 0.9% fewer opportunities. The national IT job market average declined 2.3%.

Fig.1: IT Open Positions, Connecticut*



* Estimated monthly averages are based on actual count of job openings.

Table 2: IT Job Opening Estimates by Category*

	May 13	May 12
Total IT Job Market	620	640
IT Architects/Consultants	140	120
Systems Eng./Support	140	120
Software Development	110	130
IT Management	90	170
IT Sales and Marketing	50	20
Systems Administration	50	50
Business/Process Design	20	20
Hardware Engineering	10	0

Table 3: Top 15 Needed Skills (Job Openings*)

	May 13	May 12
Business Analysis	170	160
SQL	150	130
Large system technologies	140	100
Java	120	90
Flash	110	0
Windows OS	100	110
Oracle DBMS	100	90
Offshore team coordination	90	60
Mainframe	90	50
C++/VC++	80	80
Unix	80	70
Linux	60	90
XML	60	60
Web Services	60	40
SOA (Service Oriented Architecture)	50	20



CT Technology Council
222 Pitkin St., Suite 113 East Hartford, CT 06108
phone: (860) 289 - 0878
web: <http://www.ct.org>

METHODOLOGY

SkillPROOF surveys the inventories of job openings at large, regional and nationwide direct employers. Job openings are counted and verified every 24 hours. All data sources have been verified for timely removal of filled or closed positions. No data from job boards or search firms are included.

For this report SkillPROOF estimates the counts of job openings. Estimates are calculated directly from SkillPROOF's actual daily counts of job openings. As a base for its calculations, SkillPROOF uses data and findings from reports of the Bureau of Labor Statistics (BLS) <http://www.bls.gov>.



SkillPROOF Inc.
510 Barnum Ave, Suite 402 • Bridgeport, CT 06608
phone: (917) 463 - 3941 • fax: (815) 642-8694
web: <http://www.skillproof.com>