

SHORT TERM IT JOB TRENDS	Connecticut	●
	Massachusetts	▲
	New York Metro	●
	National	●

Labor demand for IT professionals in Connecticut may have bottomed out. After seven months of steady declines the number of job openings posted by employers held steady in October. Employers posted a daily average of 480 opportunities. Together with September this is lowest labor demand for IT professionals in Connecticut since we started our records in 2004. The issue remains that new IT jobs in larger numbers are very hard to produce. Connecticut's IT heavy Financial Services sector has reduced staff over the past years. This loss will be difficult to recover. IT in the Healthcare sector may be growing but it will not fill the hole in the foreseeable future.

Table 1: IT Job Openings, Connecticut*

Oct 12	Sep 12	Aug 12	Oct 11	Oct 10
480	480	530	760	950

Job opportunities in the New York Metro area continued to erode over the last 30 days. The market there declined 6.5% adding another disappointing month for job seekers. In Massachusetts the market improved a little bit. We counted 1.5% more job opportunities than in September. Nationwide labor demand for IT professionals declined 3.0%.

Fig.1: IT Open Positions, Connecticut*

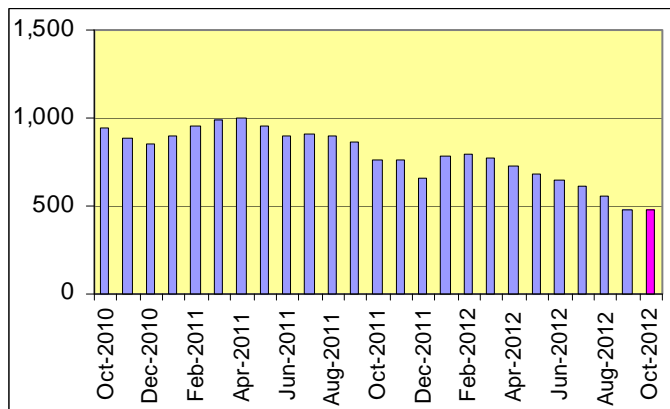


Table 2: IT Job Opening Estimates by Category*

	Oct 12	Oct 11
Total IT Job Market	480	760
IT Architects/Consultants	120	180
Software Development	100	110
IT Management	80	190
Systems Eng./Support	70	140
IT Sales and Marketing	40	20
Business/Process Design	40	50
Systems Administration	30	50
Training/Tech Writing	N/A	10
Misc. IT Job Categories	10	20

Table 3: Top 15 Needed Skills (Job Openings*)

	Oct 12	Oct 11
SQL	150	160
Business Analysis	120	190
Oracle DBMS	90	150
Java	80	110
Windows OS	80	90
Large system technologies	80	170
Microsoft SQL Server	70	110
C++/VC++	60	60
C#	50	60
Offshore team coordination	50	80
Unix	50	70
XML	40	90
Linux	40	70
Mainframe	40	100
ETL	40	50

*) Estimated monthly averages are based on actual count of job openings.

METHODOLOGY

SkillPROOF surveys the inventories of job openings at large, regional and nationwide direct employers. Job openings are counted and verified every 24 hours. All data sources have been verified for timely removal of filled or closed positions. No data from job boards or search firms are included.

For this report SkillPROOF estimates the counts of job openings. Estimates are calculated directly from SkillPROOF's actual daily counts of job openings. As a base for its calculations, SkillPROOF uses data and findings from reports of the Bureau of Labor Statistics (BLS) <http://www.bls.gov>.



CT Technology Council
222 Pitkin St., Suite 113 East Hartford, CT 06108
phone: (860) 289 - 0878
web: <http://www.ct.org>



SkillPROOF Inc.
510 Barnum Ave, Suite 402 • Bridgeport, CT 06608
phone: (917) 463 - 3941 • fax: (815) 642-8694
web: <http://www.skillproof.com>