

SHORT TERM IT JOB TRENDS	Connecticut	●
	Massachusetts	●
	New York Metro	●
	National	●

It's not easy to find jobs in Connecticut. The number of posted job openings for IT professionals had been on the rise for most of the first half of this year but now employers are pulling back again. Job opportunities for technology specialists declined 8.1% in June as compared to May leaving job seekers in this field with 570 openings (estimate) to review and apply. The meager demand is not limited to information technology jobs but can be noticed across the job spectrum. The Hartford Courant reported (<http://bit.ly/15edJpN>), based on information from the Bureau of Economic Analysis, that Connecticut was last in economic growth in 2012 compared with all other states in the country.

Looking at industry sectors only job postings in Healthcare increased slightly in June as compared to May. Other industries held steady or, like employers in Insurance posted fewer openings.

Table 1: IT Job Openings, Connecticut*

Jun 13	May 13	Apr 12	Jun 12	Jun 11
570	620	600	630	860

The New York Metro area was flying much higher than Connecticut in June. Job postings for IT professionals increased 11.5%. The national average climbed a healthy 7.1%.

Fig.1: IT Open Positions, Connecticut*

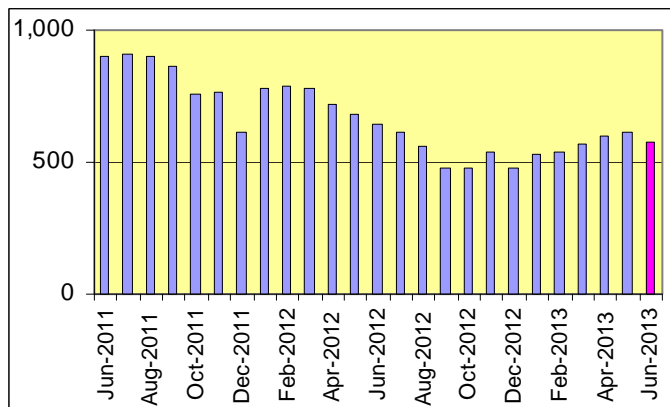


Table 2: IT Job Opening Estimates by Category*

	Jun 13	Jun 12
Total IT Job Market	570	630
IT Architects/Consultants	140	120
Systems Eng./Support	130	130
Software Development	100	120
IT Management	90	150
IT Sales and Marketing	50	20
Systems Administration	50	40
Business/Process Design	20	20
Training/Tech Writing	10	10

Table 3: Top 15 Needed Skills (Job Openings*)

	Jun 13	Jun 12
Business Analysis	170	150
SQL	150	120
Large system technologies	140	90
Oracle DBMS	120	90
Java	100	80
Windows OS	100	80
Unix	90	70
Linux	80	90
Mainframe	80	50
Microsoft SQL Server	70	80
C++/VC++	70	90
Offshore team coordination	60	70
XML	60	50
Web Services	60	40
DB2 (IBM)	50	30



CT Technology Council
222 Pitkin St., Suite 113 East Hartford, CT 06108
phone: (860) 289 - 0878
web: <http://www.ct.org>

*) Estimated monthly averages are based on actual count of job openings.

METHODOLOGY

SkillPROOF surveys the inventories of job openings at large, regional and nationwide direct employers. Job openings are counted and verified every 24 hours. All data sources have been verified for timely removal of filled or closed positions. No data from job boards or search firms are included.

For this report SkillPROOF estimates the counts of job openings. Estimates are calculated directly from SkillPROOF's actual daily counts of job openings. As a base for its calculations, SkillPROOF uses data and findings from reports of the Bureau of Labor Statistics (BLS) <http://www.bls.gov>.