

SHORT TERM IT JOB TRENDS	Connecticut ▲
	Massachusetts ●
	New York Metro ▲
	National ●

Coming off the camel back from last year are we up for another one? Camel back means that employers increase their posted labor needs during the first quarter of the year then keep job postings steady over the summer and fall and then drop back during the last quarter. Take a look at the chart. The net result is that the annual labor market is flat. When this pattern repeats with smaller annual averages then the job market is in decline. 2012 was such a year.

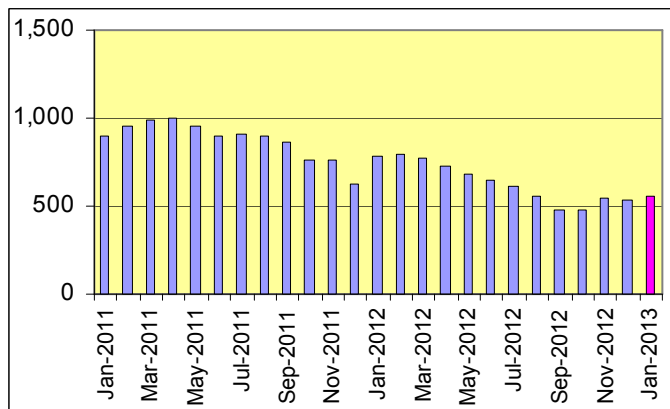
Last month, employers posted 6.1% more job openings for IT professionals than in December. We expect more to come during the first quarter. Now is the time for job seekers to through their hat into the ring. While employers may not recruit for all posted positions right away job seekers need to keep their resume updated with employers.

Table 1: IT Job Openings, Connecticut*

Jan 13	Dec 12	Nov 12	Jan 12	Jan 11
520	490	550	770	850

Job seekers in the New York Metro area found 2.6% more job openings in January as compared to December. Year-over-year job postings are down 7.0% in the Big Apple. The national average remained basically unchanged (down -0.3%).

Fig.1: IT Open Positions, Connecticut*



*) Estimated monthly averages are based on actual count of job openings.

METHODOLOGY
SkillPROOF surveys the inventories of job openings at large, regional and nationwide direct employers. Job openings are counted and verified every 24 hours. All data sources have been verified for timely removal of filled or closed positions. No data from job boards or search firms are included.
For this report SkillPROOF estimates the counts of job openings. Estimates are calculated directly from SkillPROOF's actual daily counts of job openings. As a base for its calculations, SkillPROOF uses data and findings from reports of the Bureau of Labor Statistics (BLS) <http://www.bls.gov>.

Table 2: IT Job Opening Estimates by Category*

	Jan 13	Jan 12
Total IT Job Market	480	730
IT Architects/Consultants	120	170
Software Development	100	120
IT Management	90	190
Systems Eng./Support	70	130
IT Sales and Marketing	40	20
Systems Administration	40	30
Business/Process Design	10	40
Training/Tech Writing	10	10
Misc.IT Job Categories	20	0

Table 3: Top 15 Needed Skills (Job Openings*)

	Jan 13	Jan 12
SQL	150	190
Business Analysis	130	180
Oracle DBMS	100	110
Java	90	110
Microsoft SQL Server	80	110
Large system technologies	80	140
Windows OS	80	110
Unix	60	60
C++/VC++	50	70
C#	50	50
Offshore team coordination	50	80
XML	40	80
Linux	40	50
DB2 (IBM)	40	60
Mainframe	40	100



CT Technology Council
222 Pitkin St., Suite 113 East Hartford, CT 06108
phone: (860) 289 - 0878
web: <http://www.ct.org>



SkillPROOF Inc.
510 Barnum Ave, Suite 402 • Bridgeport, CT 06608
phone: (917) 463 - 3941 • fax: (815) 642-8694
web: <http://www.skillproof.com>