

SHORT TERM IT JOB TRENDS	Connecticut ↓
	Massachusetts ○
	New York Metro ↓
	National ↓

Employers in Connecticut cut back their posted staff needs in July compared to June. IT professionals found a daily average of 550 job openings in July. This is a drop of 3.5% compared to the previous month. Year-over-year employers in the state currently post 60 fewer openings (daily average). This means that the IT job market continues to decline.

According to statistics of the Connecticut Department of Labor the Information sector has lost 16,500 jobs (not job openings!) since the end of 2001 (the burst of the internet bubble) and continues to decline. In relative terms this is 34.9% of all jobs in this sector. The other big sector for IT employment is Financial Services. While employment in this sector was slowly growing from 2001 through 2007, the sector lost 12,300 jobs since then and like the Information sector, continues to decline.

Table 1: IT Job Openings, Connecticut*

Jul 13	Jun 13	May 12	Jul 12	Jul 11
550	570	620	620	880

The IT job market in the New York Metro area remained virtually unchanged (down 0.4%) compared to June. The national average lost 1.0% at the same time.

Fig.1: IT Open Positions, Connecticut*

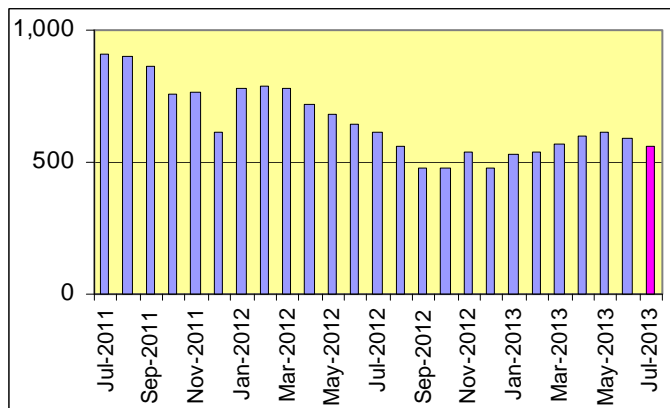


Table 2: IT Job Opening Estimates by Category*

	Jul 13	Jul 12
Total IT Job Market	550	620
IT Architects/Consultants	150	110
Software Development	110	120
IT Management	100	150
Systems Eng./Support	100	140
IT Sales and Marketing	40	30
Systems Administration	40	40
Business/Process Design	10	20
Training/Tech Writing	10	10

Table 3: Top 15 Needed Skills (Job Openings*)

	Jul 13	Jul 12
Business Analysis	180	160
SQL	150	130
Large system technologies	130	100
Oracle DBMS	120	100
Java	100	80
Windows OS	90	90
Mainframe	80	50
Unix	80	70
Linux	70	70
Microsoft SQL Server	70	80
Offshore team coordination	70	70
XML	60	40
DB2 (IBM)	60	30
C++/VC++	50	110
Web Services	50	50



CT Technology Council
222 Pitkin St., Suite 113 East Hartford, CT 06108
phone: (860) 289 - 0878
web: <http://www.ct.org>

*) Estimated monthly averages are based on actual count of job openings.

METHODOLOGY

SkillPROOF surveys the inventories of job openings at large, regional and nationwide direct employers. Job openings are counted and verified every 24 hours. All data sources have been verified for timely removal of filled or closed positions. No data from job boards or search firms are included.

For this report SkillPROOF estimates the counts of job openings. Estimates are calculated directly from SkillPROOF's actual daily counts of job openings. As a base for its calculations, SkillPROOF uses data and findings from reports of the Bureau of Labor Statistics (BLS) <http://www.bls.gov>.



SkillPROOF Inc.
510 Barnum Ave, Suite 402 • Bridgeport, CT 06608
phone: (917) 463 - 3941 • fax: (815) 642-8694
web: <http://www.skillproof.com>