

SHORT TERM IT JOB TRENDS	Connecticut
	Massachusetts
	New York Metro
	National

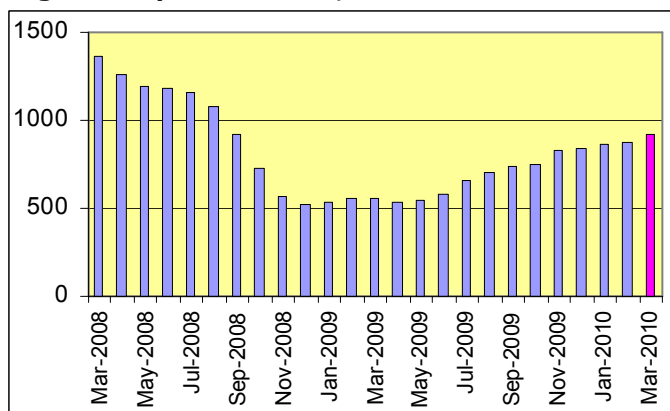
The IT job market continued to expand in March. IT professionals had 9.4% more opportunities than in February. Leading the expansion of the job market are firms in Financial Services and Healthcare. In March, employers in HiTech began to join the job market with additional requirements signaling more confidence about the economy. Demand from Insurance companies is increasing incrementally.

Table 1: IT Job Openings, Connecticut*

Mar 10	Feb 10	Jan 10	Mar 09	Mar 08
930	850	790	580	1400

IT job markets in New York City and Massachusetts experienced significant growth. In the New York Metro area, the number of opportunities for IT job seekers grew 26.8% while in Massachusetts employers posted 18.0% more job openings. The national IT job market grew 13.5% in March.

Fig. 1: IT Open Positions, Connecticut*



Requirements for most core IT occupations increased including Systems Engineering / Support (up 12.5%), Software Development (up 12.0%), IT Architects / Consultants (up 25.0%) and IT Management (up 4.8%).

Table 2: IT Job Opening Estimates by Category*

	Mar 10	Mar 09
Total IT Job Market	890	580
Software Development	270	120
IT Management	180	120
Systems Eng./Support	200	150
IT Architects/Consultants	140	110
IT Sales and Marketing	40	20
Business/Process Design	30	20
Systems Administration	20	40
Hardware Engineering	0	0
Training/Tech Writing	0	0
Misc.IT Job Categories	10	10

Table 3: Top 15 Needed Skills (Job Openings*)

	Mar 10	Mar 09
SQL	310	150
Business Analysis	310	150
Java	270	90
Oracle DBMS	260	110
Large system technologies	260	140
C++/VC++	190	60
Unix	170	110
Mainframe	170	100
Windows OS	170	100
Microsoft SQL Server	150	80
C#	120	40
XML	120	80
Offshore team coordination	120	20
Linux	100	40
Web Services	100	70

*) Estimated monthly averages are based on actual count of job openings. Estimates for February 2010 has been revised.

METHODOLOGY

SkillPROOF surveys the inventories of job openings at large, regional and nationwide direct employers. Job openings are counted and verified every 24 hours. All data sources have been verified for timely removal of filled or closed positions. No data from job boards or search firms are included.

For this report SkillPROOF estimates the counts of job openings. Estimates are calculated directly from SkillPROOF's actual daily counts of job openings. As a base for its calculations, SkillPROOF uses data and findings from reports of the Bureau of Labor Statistics (BLS) <http://www.bls.gov>.



CT Technology Council
222 Pitkin St., Suite 113 East Hartford, CT 06108
phone: (860) 289 - 0878
web: <http://www.ct.org>



SkillPROOF Inc.
510 Barnum Ave, Suite 402 • Bridgeport, CT 06608
phone: (917) 463 - 3941 • fax: (815) 642-8694
web: <http://www.skillproof.com>