

SHORT TERM IT JOB TRENDS	Connecticut ▲
	Massachusetts ●
	New York Metro ▲
	National ●

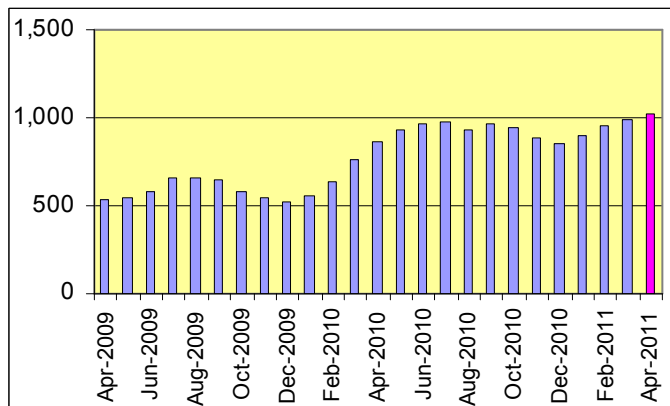
Good news: Spring has arrived and the number of job opportunities is growing for IT professionals in the state. Last month, employers posted 1,030 open positions, an increase of 4% compared to March. Employers in Healthcare, Financial Services, Banking and IT Services contributed to the growth while firms in Insurance and HiTech had declining interest.

Table 1: IT Job Openings, Connecticut*

Apr 11	Mar 11	Feb 11	Apr 10	Apr 09
1,030	990	970	880	520

Nevertheless the overall job market seems to slow down again after a reasonably good start at the beginning of the year. The New York Metro area is a case for that. Since January this area had less growth every month. In April the volume of job postings for IT professionals remained virtually unchanged compared to March. In Massachusetts the demand for new labor reversed. Employers there posted on average 2.2% fewer openings than in March. At the national level the daily average of IT job openings declined 1.5%.

Fig.1: IT Open Positions, Connecticut*



Job postings for professionals in IT Management grew 10.0% in Connecticut last month.

*) Estimated monthly averages are based on actual count of job openings.

Table 2: IT Job Opening Estimates by Category*

	Apr 11	Apr 10
Total IT Job Market	1030	880
IT Management	300	230
Systems Eng./Support	190	180
Software Development	180	180
IT Architects/Consultants	170	160
Systems Administration	60	30
IT Sales and Marketing	40	50
Business/Process Design	40	40
Training/Tech Writing	10	0
Hardware Engineering	0	0

Table 3: Top 15 Needed Skills (Job Openings*)

	Apr 11	Apr 10
Business Analysis	230	230
SQL	210	180
Java	200	170
Large system technologies	190	150
Oracle DBMS	180	170
Windows OS	140	100
Microsoft SQL Server	110	80
C++/VC++	110	150
Unix	110	110
XML	110	70
Web Services	110	70
Offshore team coordination	100	80
Mainframe	100	100
Linux	90	80
C#	80	70



CT Technology Council
222 Pitkin St., Suite 113 East Hartford, CT 06108
phone: (860) 289 - 0878
web: <http://www.ct.org>

METHODOLOGY

SkillPROOF surveys the inventories of job openings at large, regional and nationwide direct employers. Job openings are counted and verified every 24 hours. All data sources have been verified for timely removal of filled or closed positions. No data from job boards or search firms are included.

For this report SkillPROOF estimates the counts of job openings. Estimates are calculated directly from SkillPROOF's actual daily counts of job openings. As a base for its calculations, SkillPROOF uses data and findings from reports of the Bureau of Labor Statistics (BLS) <http://www.bls.gov>.



SkillPROOF Inc.
510 Barnum Ave, Suite 402 • Bridgeport, CT 06608
phone: (917) 463 - 3941 • fax: (815) 642-8694
web: <http://www.skillproof.com>