

**SHORT
TERM
IT JOB
TRENDS**

Connecticut ↑
Massachusetts ↑
New York Metro ↑
National ↑

As predicted in January, more labor demand for IT specialists is returning to Connecticut. In February, employers in the state posted 14.1% more opportunities than in January. If the trend continues the IT job market will reach 1000 job openings in March which would be the first time since August 2008.

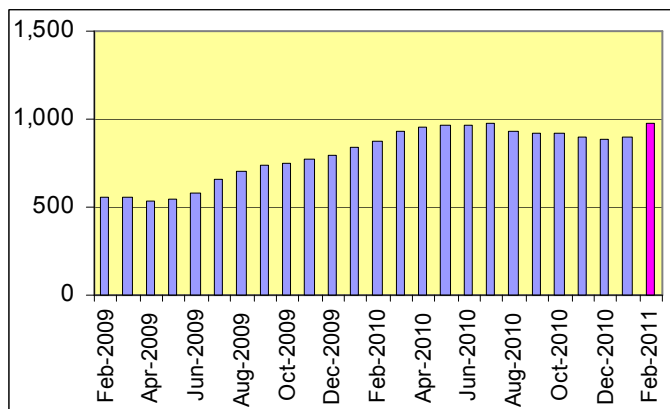
All industry sectors improved. Most notable was the increased demand from Financial Services, HiTech and IT Services.

Table 1: IT Job Openings, Connecticut*

Feb 11	Jan 11	Dec 10	Feb 10	Feb 09
970	850	820	610	530

All neighboring IT labor markets improved in February. In Massachusetts we counted a daily average of 4,860 opportunities (up 5.4%) and in the New York Metro area 9,550 opportunities (up 10.3%). These are great improvements over the previous months which should lead to some substantial hiring. The national average of IT job openings increased 5.3% in February.

Fig. 1: IT Open Positions, Connecticut*



Hands-on technology occupations are the ones employers are currently looking for in Connecticut. Demand improved for Software Development (up 23.5%) and Systems Engineering / Support (up 21.4%).

* Estimated monthly averages are based on actual count of job openings.

Table 2: IT Job Opening Estimates by Category*

	Feb 11	Feb 10
Total IT Job Market	970	610
IT Management	230	140
Software Development	210	180
Systems Eng./Support	170	110
IT Architects/Consultants	170	100
Systems Administration	60	20
IT Sales and Marketing	50	30
Business/Process Design	50	20
Training/Tech Writing	10	10
Misc.IT Job Categories	20	10

Table 3: Top 15 Needed Skills (Job Openings*)

	Feb 11	Feb 10
Business Analysis	240	160
Java	190	140
SQL	170	160
Oracle DBMS	150	110
Large system technologies	150	120
Windows OS	120	100
C++/VC++	110	110
Unix	90	80
Linux	90	60
Web Services	90	50
Microsoft SQL Server	80	90
Offshore team coordination	80	60
XML	80	50
Mainframe	70	80
DB2 (IBM)	60	50



CT Technology Council
222 Pitkin St., Suite 113 East Hartford, CT 06108
phone: (860) 289 - 0878
web: <http://www.ct.org>

METHODOLOGY

SkillPROOF surveys the inventories of job openings at large, regional and nationwide direct employers. Job openings are counted and verified every 24 hours. All data sources have been verified for timely removal of filled or closed positions. No data from job boards or search firms are included.

For this report SkillPROOF estimates the counts of job openings. Estimates are calculated directly from SkillPROOF's actual daily counts of job openings. As a base for its calculations, SkillPROOF uses data and findings from reports of the Bureau of Labor Statistics (BLS) <http://www.bls.gov>.