

| | |
|---------------------------------|-------------------------|
| SHORT TERM IT JOB TRENDS | Connecticut ● |
| | Massachusetts ▲ |
| | New York Metro ● |
| | National ● |

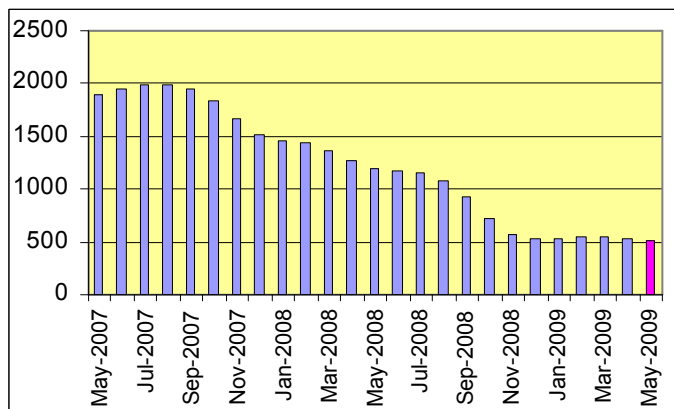
While the stock market gains some momentum, jobs are still hard to come by. Since stocks tend to recover first before demand for labor picks up after a recession the current development in the stock market is creating some optimism. This explains why the demand for labor, including IT professionals is still flat without signs of recovery yet. In May, employers in Connecticut posted a daily average of 490 vacant positions down from 520 in April. We expect more losses as we go through the summer with more opportunities during the fall.

Table 1: IT Job Openings, Connecticut*

| May 09 | Apr 09 | Mar 09 | May 08 | May 07 |
|--------|--------|--------|--------|--------|
| 490 | 520 | 580 | 1170 | 1910 |

The decline of demand for IT workers in Massachusetts has slowed to 1.9% as compared to April. Like Connecticut, this market has lost more than half of its job market in the past 12 months. The IT job market in New York City continues its recovery. Employers posted 3.9% more opportunities than in April. The national IT job market declined 4.8%.

Fig.1: IT Open Positions, Connecticut



Job vacancies showed less demand for professionals in Software Development (down 10.0%) and Systems Engineering / Support (down 8.3%). Other occupations remained unchanged.

* Estimated monthly averages are based on actual count of job openings.

Table 2: IT Job Opening Estimates by Category*

| | May 09 | May 08 |
|---------------------------|--------|--------|
| Total IT Job Market | 490 | 1170 |
| IT Management | 120 | 260 |
| Systems Eng./Support | 110 | 250 |
| Software Development | 90 | 220 |
| IT Architects/Consultants | 80 | 200 |
| Systems Administration | 40 | 60 |
| IT Sales and Marketing | 30 | 70 |
| Business/Process Design | 20 | 50 |
| Training/Tech Writing | 0 | 20 |
| Misc.IT Job Categories | 10 | 30 |

Table 3: Top 15 Needed Skills (Job Openings*)

| | May 09 | May 08 |
|---------------------------|--------|--------|
| SQL | 130 | 240 |
| Business Analysis | 120 | 250 |
| Large system technologies | 110 | 210 |
| Unix | 100 | 200 |
| Oracle DBMS | 90 | 200 |
| Windows OS | 80 | 160 |
| Mainframe | 70 | 110 |
| Microsoft SQL Server | 60 | 110 |
| DB2 (IBM) | 60 | 110 |
| Java | 60 | 170 |
| C++/VC++ | 50 | 60 |
| Web Services | 50 | 50 |
| XML | 50 | 100 |
| ETL | 50 | 30 |
| Linux | 40 | 60 |



CT Technology Council
222 Pitkin St., Suite 113 East Hartford, CT 06108
phone: (860) 289 - 0878
web: <http://www.ct.org>

METHODOLOGY

SkillPROOF surveys the inventories of job openings at large, regional and nationwide direct employers. Job openings are counted and verified every 24 hours. All data sources have been verified for timely removal of filled or closed positions. No data from job boards or search firms are included.

For this report SkillPROOF estimates the counts of job openings. Estimates are calculated directly from SkillPROOF's actual daily counts of job openings. As a base for its calculations, SkillPROOF uses data and findings from reports of the Bureau of Labor Statistics (BLS) <http://www.bls.gov>.



SkillPROOF Inc.
510 Barnum Ave, Suite 402 • Bridgeport, CT 06608
phone: (917) 463 - 3941 • fax: (815) 642-8694
web: <http://www.skillproof.com>