

<b>SHORT TERM IT JOB TRENDS</b>	<b>Connecticut</b>	●
	<b>Massachusetts</b>	●
	<b>New York Metro</b>	▲
	<b>National</b>	●

The year 2011 finished with a further reduction in labor demand for IT professionals in Connecticut. The number of posted job openings declined 3.9% in December as compared

to November. Year-over-year demand for IT professionals was down 11% in December. Compared to peak demand in June 2006 job postings are down 69.1%. While other states have recovered better, demand for IT workers in the state has not come back yet.

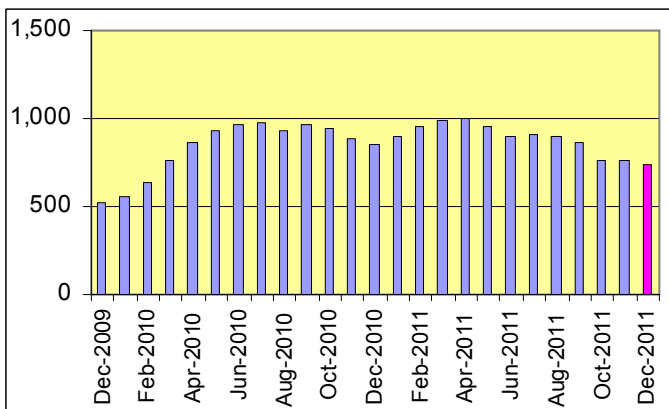
The bright light among sectors hiring IT staff is Healthcare. While demand from other industries showed significant decline last year, the healthcare sector continued to show labor needs.

**Table 1: IT Job Openings, Connecticut\***

Dec 11	Nov 11	Oct 11	Dec 10	Dec 09
730	760	760	820	530

Developments of IT job markets in other areas looked more positive in December. In the New York Metro area IT labor demand increased by 3.2%. This is good news for job seekers there since demand in this market dropped significantly over the past six months. It seems the market has bottomed out. In Massachusetts IT job openings increased 3.0% last month. The job market here recovered well in 2010 but was flat last year. The national average declined 0.2% in December.

**Fig.1: IT Open Positions, Connecticut\***



**Table 2: IT Job Opening Estimates by Category\***

	Dec 11	Dec 10
Total IT Job Market	730	820
IT Management	190	240
IT Architects/Consultants	170	160
Systems Eng./Support	130	130
Software Development	120	150
Business/Process Design	40	40
Systems Administration	30	40
IT Sales and Marketing	20	50
Training/Tech Writing	10	10
Misc.IT Job Categories	0	10

**Table 3: Top 15 Needed Skills (Job Openings\*)**

	Dec 11	Dec 10
SQL	190	160
Business Analysis	180	210
Large system technologies	140	130
Windows OS	110	100
Oracle DBMS	110	150
Microsoft SQL Server	110	70
Java	110	170
Mainframe	100	60
Offshore team coordination	80	80
XML	80	70
Web Services	70	70
C++/VC++	70	110
Unix	60	100
DB2 (IBM)	60	50
C#	50	40



**CT Technology Council**  
222 Pitkin St., Suite 113 East Hartford, CT 06108  
phone: (860) 289 - 0878  
web: <http://www.ct.org>

\*) Estimated monthly averages are based on actual count of job openings.

**METHODOLOGY**

SkillPROOF surveys the inventories of job openings at large, regional and nationwide direct employers. Job openings are counted and verified every 24 hours. All data sources have been verified for timely removal of filled or closed positions. No data from job boards or search firms are included.

For this report SkillPROOF estimates the counts of job openings. Estimates are calculated directly from SkillPROOF's actual daily counts of job openings. As a base for its calculations, SkillPROOF uses data and findings from reports of the Bureau of Labor Statistics (BLS) <http://www.bls.gov>.



**SkillPROOF Inc.**  
510 Barnum Ave, Suite 402 • Bridgeport, CT 06608  
phone: (917) 463 - 3941 • fax: (815) 642-8694  
web: <http://www.skillproof.com>