

**SHORT
TERM
IT JOB
TRENDS**

- Connecticut** ●
- Massachusetts** ▼
- New York Metro** ▼
- National** ▼

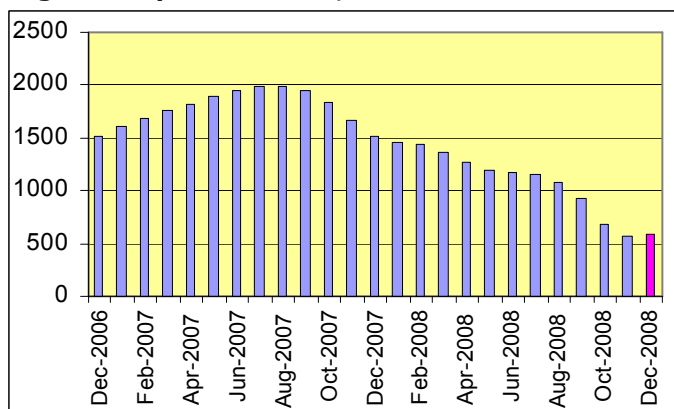
The year 2008 ended for IT job seekers in Connecticut with a glimmer of hope. Employers increased their number of job openings by 4% as compared to November. This up tick in available jobs may signal that the job market has reached its bottom. IT job market development during the first quarter of this year will signal what to expect for 2009 since employers post most of their planned open positions during this time.

Table 1: IT Job Openings, Connecticut*

Dec 08	Nov 08	Oct 08	Dec 07	Dec 06
520	500	660	1,480	1,440

Other IT job markets in the North East continued their rapid decline. Job seekers in New York City found 17.7% fewer opportunities and in Massachusetts the job market declined 26.7%. At a national level, the number of IT job vacancies declined 15.1%.

Fig.1: IT Open Positions, Connecticut



The increased demand for IT professionals in December was mostly for specialists in Systems Engineering / Support (up 22.2%), IT Architects / Consultants (up 10.0%) and Software Development (up 11.1%). Financial Services employers in Connecticut with large IT architectures are looking for staff to maintain it. Mainframe type skills are a consistent job requirement from employers in the state.

* Estimated monthly averages are based on actual count of job openings.

Table 2: IT Job Opening Estimates by Category*

	Dec 08	Dec 07
Total IT Job Market	520	1480
IT Management	120	390
Systems Eng./Support	110	290
IT Architects/Consultants	110	210
Software Development	100	300
Systems Administration	40	90
IT Sales and Marketing	20	60
Business/Process Design	10	90
Training/Tech Writing	10	10
Misc.IT Job Categories	10	30

Table 3: Top 15 Needed Skills (Job Openings*)

	Dec 08	Dec 07
SQL	140	350
Large system technologies	120	260
Business Analysis	110	290
Oracle DBMS	90	250
C++/VC++	90	50
Unix	90	230
Java	80	170
Microsoft SQL Server	80	140
Mainframe	80	110
Windows OS	80	190
DB2 (IBM)	70	110
XML	60	120
VB/VB.NET	50	120
Linux	50	80
Web Services	50	80



CT Technology Council
222 Pitkin St., Suite 113 East Hartford, CT 06108
phone: (860) 289 - 0878
web: <http://www.ct.org>

METHODOLOGY

SkillPROOF surveys the inventories of job openings at large, regional and nationwide direct employers. Job openings are counted and verified every 24 hours. All data sources have been verified for timely removal of filled or closed positions. No data from job boards or search firms are included.

For this report SkillPROOF estimates the counts of job openings. Estimates are calculated directly from SkillPROOF's actual daily counts of job openings. As a base for its calculations, SkillPROOF uses data and findings from reports of the Bureau of Labor Statistics (BLS) <http://www.bls.gov>.



SkillPROOF Inc.
510 Barnum Ave, Suite 402 • Bridgeport, CT 06608
phone: (917) 463 - 3941 • fax: (815) 642-8694
web: <http://www.skillproof.com>