

**SHORT  
TERM  
IT JOB  
TRENDS**

<b>Connecticut</b>	↓
<b>Massachusetts</b>	○
<b>New York Metro</b>	↓
<b>National</b>	↓

The year 2007 finished similar to previous years. Even though the number of requirements for IT professionals declined in December, the current level of need for IT talent is slightly

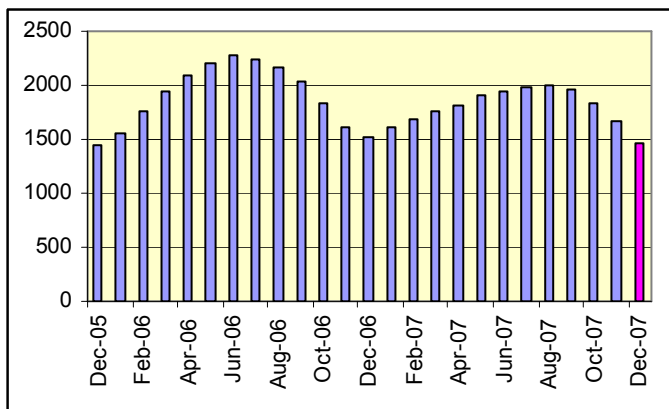
higher than in December 2006 or December 2005. In the past two years, demand for IT workers in Connecticut rose during the first half of the year with demand peaking in the summer, then returning to the level seen at the beginning of the year. We expect a similar development for 2008 with demand lower due to the sub-prime crisis and the strong influence of Financial Services employers on Connecticut's IT job market.

**Table 1: IT Job Openings, Connecticut\***

Dec 07	Nov 07	Oct 07	Dec 06	Dec 05
1,480	1,660	1,820	1,440	1,430

The IT job market in the New York Metro area continued its decline at a much slower pace than before. This raises hope that employers may increase their employment opportunities during the first quarter of 2008. Compared with December 2006, the job market in the New York Metro area had lost about a third of its size. The national IT job market declined 2.4%, losing 1.0% compared with a year ago.

**Fig.1: IT Open Positions, Connecticut**



**Table 2: IT Job Opening Estimates by Category\***

	Dec 07	Dec 06
<b>Total IT Job Market</b>	1480	1440
IT Management	390	330
Software Development	300	320
Systems Eng./Support	290	390
IT Architects/Consultants	210	180
Business/Process Design	90	70
Systems Administration	90	70
IT Sales and Marketing	60	40
Training/Tech Writing	10	20
Misc.IT Job Categories	30	30

**Table 3: Top 15 Needed Skills (Job Openings\*)**

	Dec 07	Dec 06
SQL	350	340
Business Analysis	290	280
Large system technologies	260	160
Oracle DBMS	250	260
Unix	230	280
Windows OS	190	230
Java	170	210
Microsoft SQL Server	140	160
VB/VB.NET	120	80
XML	120	70
DB2 (IBM)	110	80
Mainframe	110	80
Offshore team coordination	90	90
Linux	80	120
Web Services	80	40

\*) Estimated monthly averages are based on actual count of job openings.

**CT Technology Council**  
222 Pitkin St., Suite 113  
East Hartford, CT 06108  
phone: (860) 289 - 0878  
web: <http://www.ct.org>

**HARVEY NASH**  
The Power of Talent  
Harvey Nash  
1 Corporate Drive, Suite 522  
Shelton, CT 06484  
phone: (203) 225 - 0544  
web: <http://www.harveynash.com>

**SkillPROOF Inc.**  
510 Barnum Ave, Suite 402 • Bridgeport, CT 06608  
phone: (917) 463 - 3941 • fax: (917) 546 - 0997  
web: <http://www.skillproof.com>

**METHODOLOGY**

SkillPROOF surveys the inventories of job openings at large, regional and nationwide direct employers. Job openings are counted and verified every 24 hours. All data sources have been verified for timely removal of filled or closed positions. No data from job boards or search firms are included.

For this report SkillPROOF estimates the counts of job openings. Estimates are calculated directly from SkillPROOF's actual daily counts of job openings. As a base for its calculations, SkillPROOF uses data and findings from reports of the Bureau of Labor Statistics (BLS) <http://www.bls.gov>.