

SHORT TERM IT JOB TRENDS	Connecticut ↑
	Massachusetts ↑
	New York Metro ↑
	National ↑

The pressure on the economy continues to impact the IT job market in Connecticut with it's many Financial Services and Insurance employers. In January, the number of opportunities in

Connecticut declined 6.8% as compared to December. Employers in the state now offer an estimated 1,380 job openings. Despite the negative economic news, the short term outlook is positive as the majority of employers have posted more open positions than they closed. Historically, employers in Connecticut have posted a growing number of job openings at the beginning of the year, with a peak during the summer. Of concern is that the year-over-year number of job openings during January has been falling since 2006.

Table 1: IT Job Openings, Connecticut*

Jan 08	Dec 07	Nov 07	Jan 07	Jan 06
1,380	1,480	1,660	1,550	1,480

The IT job market in the New York Metro area may be stabilizing now after a steep decline, which began in May 2007. The national IT job market declined 2.5% as compared with December 2007.

Fig.1: IT Open Positions, Connecticut

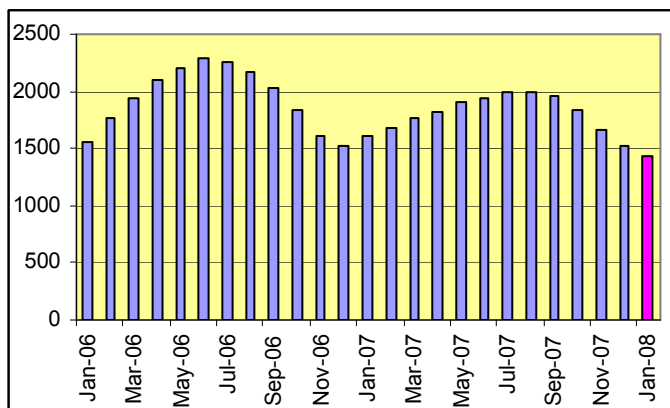


Table 2: IT Job Opening Estimates by Category*

	Jan 08	Jan 07
Total IT Job Market	1380	1550
IT Management	370	350
Software Development	290	330
Systems Eng./Support	270	420
IT Architects/Consultants	190	190
Business/Process Design	90	70
Systems Administration	90	80
IT Sales and Marketing	50	60
Training/Tech Writing	10	20
Misc.IT Job Categories	20	20

Table 3: Top 15 Needed Skills (Job Openings*)

	Jan 08	Jan 07
SQL	350	360
Business Analysis	310	350
Oracle DBMS	250	260
Unix	230	310
Windows OS	210	270
Java	160	230
Microsoft SQL Server	140	150
DB2 (IBM)	120	100
VB/VB.NET	110	80
XML	110	80
Mainframe	110	120
Linux	90	150
Offshore team coordination	90	80
Web Services	70	40
ETL	70	60

*) Estimated monthly averages are based on actual count of job openings.

METHODOLOGY

SkillPROOF surveys the inventories of job openings at large, regional and nationwide direct employers. Job openings are counted and verified every 24 hours. All data sources have been verified for timely removal of filled or closed positions. No data from job boards or search firms are included.

For this report SkillPROOF estimates the counts of job openings. Estimates are calculated directly from SkillPROOF's actual daily counts of job openings. As a base for its calculations, SkillPROOF uses data and findings from reports of the Bureau of Labor Statistics (BLS) <http://www.bls.gov>.



CT Technology Council
222 Pitkin St., Suite 113
East Hartford, CT 06108
phone: (860) 289 - 0878
web: <http://www.ct.org>



HARVEY NASH
The Power of Talent
Harvey Nash
1 Corporate Drive, Suite 522
Shelton, CT 06484
phone: (203) 225 - 0544
web: <http://www.harveynash.com>



SkillPROOF Inc.
510 Barnum Ave, Suite 402 • Bridgeport, CT 06608
phone: (917) 463 - 3941 • fax: (917) 546 - 0997
web: <http://www.skillproof.com>