

SHORT TERM IT JOB TRENDS

- Connecticut** ●
- Massachusetts** ●
- New York Metro** ●
- National** ●

As we head into the final month of 2010, employers have begun clearing their job inventories and are preparing for 2011. Job postings for IT professionals dropped 9.5% in November

compared to October. Compounding this development is the fact that the sluggish growth of the economy does not support a better result as of yet.

Most of the losses came from the Financial Services industry which showed a sharp decline in interest. On the other side HiTech and Healthcare industries posted more new openings than in October.

Table 1: IT Job Openings, Connecticut*

Nov 10	Oct 10	Sep 10	Nov 09	Nov 08
860	950	980	520	500

Other IT job markets in the area had mixed results. While demand in the New York Metro area dropped 7.1%, employers in Massachusetts added a few new opportunities (up 0.7%) in November compared to October. At the national level demand slightly increased (up 1.9%) which is a good result for this time of the year.

Fig.1: IT Open Positions, Connecticut*

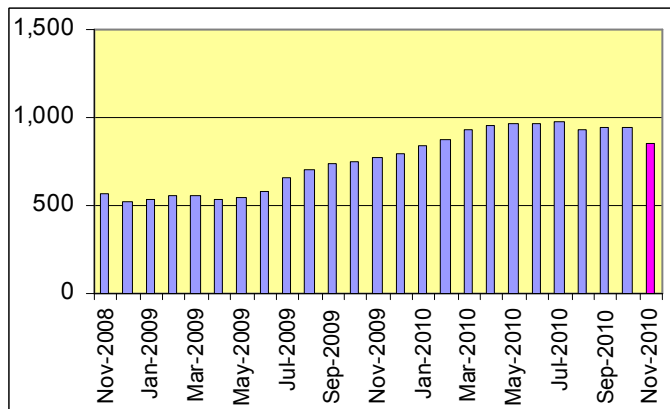


Table 2: IT Job Opening Estimates by Category*

	Nov 10	Nov 09
Total IT Job Market	860	520
IT Management	260	110
Systems Eng./Support	170	80
IT Architects/Consultants	150	110
Software Development	130	120
IT Sales and Marketing	70	30
Business/Process Design	40	30
Systems Administration	30	30
Training/Tech Writing	10	0
Misc.IT Job Categories	20	0

Table 3: Top 15 Needed Skills (Job Openings*)

	Nov 10	Nov 09
Business Analysis	220	140
Java	170	110
SQL	160	120
Large system tech.	140	130
Oracle DBMS	130	100
Windows OS	120	100
Unix	110	70
Offshore team coordination	110	30
C++/VC++	100	110
Linux	90	40
Microsoft SQL Server	80	80
Web Services	70	40
XML	60	50
Mainframe	60	70
DB2 (IBM)	50	50



CT Technology Council
222 Pitkin St., Suite 113 East Hartford, CT 06108
phone: (860) 289 - 0878
web: <http://www.ct.org>

*) Estimated monthly averages are based on actual count of job openings.

METHODOLOGY

SkillPROOF surveys the inventories of job openings at large, regional and nationwide direct employers. Job openings are counted and verified every 24 hours. All data sources have been verified for timely removal of filled or closed positions. No data from job boards or search firms are included.

For this report SkillPROOF estimates the counts of job openings. Estimates are calculated directly from SkillPROOF's actual daily counts of job openings. As a base for its calculations, SkillPROOF uses data and findings from reports of the Bureau of Labor Statistics (BLS) <http://www.bls.gov>.



SkillPROOF Inc.
510 Barnum Ave, Suite 402 • Bridgeport, CT 06608
phone: (917) 463 - 3941 • fax: (815) 642-8694
web: <http://www.skillproof.com>