

**SHORT
TERM
IT JOB
TRENDS**

- Connecticut** ●
- Massachusetts** ▼
- New York Metro** ▼
- National** ▼

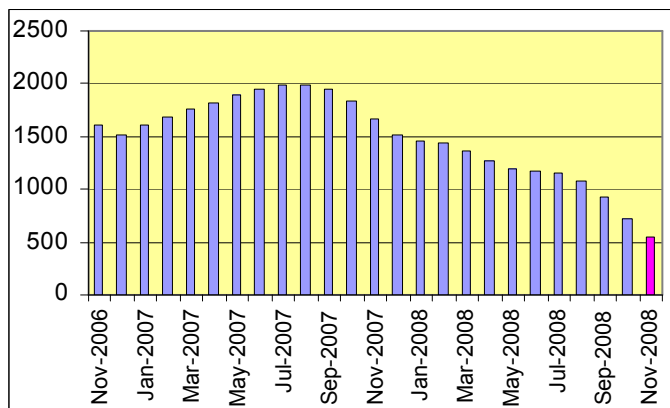
The downturn of the IT job market continued in November. Employer cut their demand by 24.2% as compared to October leaving job seekers with 500 vacancies (estimate) to choose from. While it is common for employers to reduce their job openings at year end, the current development is compounded with the effects of the weakening economy. The result is a sharp drop in demand. The expectation for December is that the job market will continue to shrink to its lowest level since SkillPROOF began tracking the IT job market in 2004.

Table 1: IT Job Openings, Connecticut*

Nov 08	Oct 08	Sep 08	Nov 07	Nov 06
500	660	990	1,660	1,520

Surrounding job markets (New York City and Massachusetts) are showing similar developments. The IT job market in the New York Metro area declined 15.0% while in Massachusetts employers posted 11.7% fewer opportunities. At a national level, the number of IT job vacancies declined 15.6%.

Fig.1: IT Open Positions, Connecticut



There was an up tick in demand for IT Architects/Consultants (up 11.1%). Job vacancies for all other IT job categories declined in line with the CT job market. The technology skills most resilient to the decline in October were Windows O/S (down 3.7%), XML (down 5.3%) and VB/VB.NET (down 6.7%).

*) Estimated monthly averages are based on actual count of job openings.

Table 2: IT Job Opening Estimates by Category*

	Nov 08	Nov 07
Total IT Job Market	500	1660
IT Management	130	430
IT Architects/Consultants	100	240
Software Development	90	320
Systems Eng./Support	90	340
Systems Administration	40	110
IT Sales and Marketing	20	60
Business/Process Design	20	110
Training/Tech Writing	10	20
Misc.IT Job Categories	10	30

Table 3: Top 15 Needed Skills (Job Openings*)

	Nov 08	Nov 07
SQL	130	430
Business Analysis	100	340
Large system technologies	90	270
Windows OS	80	200
Oracle DBMS	80	310
C++/VC++	80	60
Java	70	200
Unix	70	280
Microsoft SQL Server	60	160
XML	50	130
Mainframe	50	110
VB/VB.NET	40	120
DB2 (IBM)	40	110
Linux	30	100
Windows NT/2000/2003 Server	30	50



CT Technology Council
222 Pitkin St., Suite 113 East Hartford, CT 06108
phone: (860) 289 - 0878
web: <http://www.ct.org>

METHODOLOGY

SkillPROOF surveys the inventories of job openings at large, regional and nationwide direct employers. Job openings are counted and verified every 24 hours. All data sources have been verified for timely removal of filled or closed positions. No data from job boards or search firms are included.

For this report SkillPROOF estimates the counts of job openings. Estimates are calculated directly from SkillPROOF's actual daily counts of job openings. As a base for its calculations, SkillPROOF uses data and findings from reports of the Bureau of Labor Statistics (BLS) <http://www.bls.gov>.