

SHORT TERM IT JOB TRENDS	Connecticut ○
	Massachusetts ▲
	New York Metro ▲
	National ▲

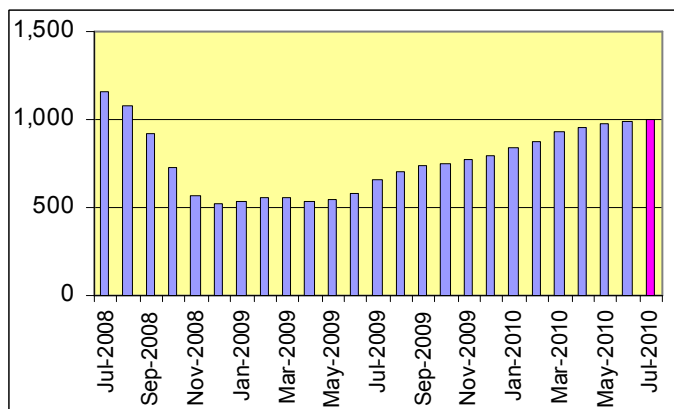
Mixed economic news as well as the traditionally slow summer season stalled IT job market growth in July in the state. Hiring more staff was not on the minds of employers which kept their level of need unchanged compared to June. With a slow economic recovery dragging on job seekers may have to tough it out.

Table 1: IT Job Openings, Connecticut*

Jul 10	Jun 10	May 10	Jul 09	Jul 08
980	970	930	610	1,140

There was slightly better news from the New York Metro area. Employers in this market posted 4.6% more openings for IT professionals. Employers in the Financial Services industry are the main drivers for additional staff. At the national level demand grew just 2.6% in July.

Fig. 1: IT Open Positions, Connecticut*



There was little change in demand for the various IT occupations. The number of job postings for IT Management positions dropped 8.0% while opportunities for Software Development and Systems Engineering / Support increased by 4.8%.

Table 2: IT Job Opening Estimates by Category*

	Jul 10	Jul 09
Total IT Job Market	980	610
IT Management	230	120
Software Development	220	140
Systems Eng./Support	220	120
IT Architects/Consultants	160	120
IT Sales and Marketing	50	20
Business/Process Design	40	20
Systems Administration	40	40
Training/Tech Writing	10	0
Hardware Engineering	10	10
Misc.IT Job Categories	10	10

Table 3: Top 15 Needed Skills (Job Openings*)

	Jul 10	Jul 09
Business Analysis	240	150
SQL	220	180
Java	200	120
Oracle DBMS	190	120
Large system technologies	150	100
Windows OS	130	90
Linux	120	80
C++/VC++	120	90
Unix	110	150
Microsoft SQL Server	90	70
Offshore team coordination	90	10
C#	70	70
Web Services	70	40
Mainframe	70	40
XML	60	70

*) Estimated monthly averages are based on actual count of job openings. Technology skill estimates have been revised.

METHODOLOGY

SkillPROOF surveys the inventories of job openings at large, regional and nationwide direct employers. Job openings are counted and verified every 24 hours. All data sources have been verified for timely removal of filled or closed positions. No data from job boards or search firms are included.

For this report SkillPROOF estimates the counts of job openings. Estimates are calculated directly from SkillPROOF's actual daily counts of job openings. As a base for its calculations, SkillPROOF uses data and findings from reports of the Bureau of Labor Statistics (BLS) <http://www.bls.gov>.



CT Technology Council
222 Pitkin St., Suite 113 East Hartford, CT 06108
phone: (860) 289 - 0878
web: <http://www.ct.org>



SkillPROOF Inc.
510 Barnum Ave, Suite 402 • Bridgeport, CT 06608
phone: (917) 463 - 3941 • fax: (815) 642-8694
web: <http://www.skillproof.com>