

<b>SHORT TERM IT JOB TRENDS</b>	<b>Connecticut</b> ●
	<b>Massachusetts</b> ▼
	<b>New York Metro</b> ▼
	<b>National</b> ▼

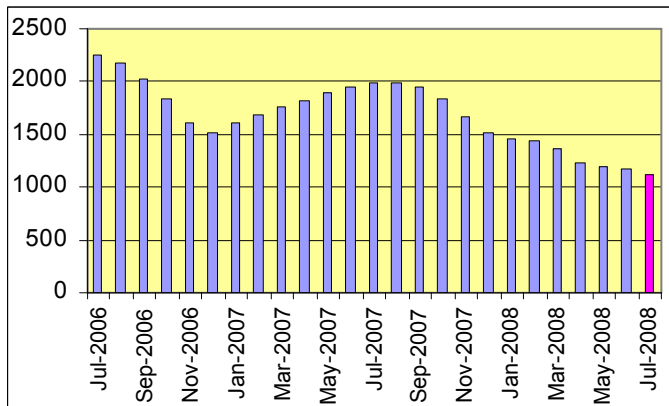
The summer of 2008 continues with weaker demand for IT professionals. In Connecticut, employers reduced their number of job openings by 5.8% leaving job seekers with an average of 1,140 opportunities. The job market growth observed in June was reversed suggesting further reductions in the coming months.

**Table 1: IT Job Openings, Connecticut\***

Jul 08	Jun 08	May 08	Jul 07	Jul 06
1,140	1,210	1,170	1,930	2,240

Job markets in surrounding areas were less affected. IT professionals in the New York Metro area faced a modest decline of 1.2%, a far cry from the steep declines of 2007. The IT job market in Massachusetts remained virtually unchanged, declining only 0.5%. The national average of open IT positions declined 2.8% as compared to June.

**Fig.1: IT Open Positions, Connecticut**



There is a bright spot for IT professionals in IT Management in Connecticut. In July, employers increased their demand by 3.6% providing an estimated 290 job openings for this group. Employers also increased job openings for Systems Administrators. The need for other occupations declined. The need of skills increased for Windows OS (up 9.6%) and Linux (up 10.3%).

**Table 2: IT Job Opening Estimates by Category\***

	Jul 08	Jul 07
Total IT Job Market	1140	1930
IT Management	290	500
Systems Eng./Support	240	470
Software Development	200	410
IT Architects/Consultants	190	230
Systems Administration	80	80
IT Sales and Marketing	70	60
Business/Process Design	40	120
Training/Tech Writing	10	20
Misc.IT Job Categories	20	40

**Table 3: Top 15 Needed Skills (Job Openings\*)**

	Jul 08	Jul 07
Business Analysis	250	470
SQL	250	510
Unix	200	390
Large system technologies	190	300
Oracle DBMS	180	400
Windows OS	140	260
Java	140	410
Microsoft SQL Server	110	190
Linux	100	170
DB2 (IBM)	90	170
XML	90	190
Mainframe	80	100
VB/VB.NET	80	140
Web Services	60	100
Offshore team coordination	60	150

\*) Estimated monthly averages are based on actual count of job openings.

**METHODOLOGY**

SkillPROOF surveys the inventories of job openings at large, regional and nationwide direct employers. Job openings are counted and verified every 24 hours. All data sources have been verified for timely removal of filled or closed positions. No data from job boards or search firms are included.

For this report SkillPROOF estimates the counts of job openings. Estimates are calculated directly from SkillPROOF's actual daily counts of job openings. As a base for its calculations, SkillPROOF uses data and findings from reports of the Bureau of Labor Statistics (BLS) <http://www.bls.gov>.



**CT Technology Council**  
222 Pitkin St., Suite 113 East Hartford, CT 06108  
phone: (860) 289 - 0878  
web: <http://www.ct.org>



**SkillPROOF Inc.**  
510 Barnum Ave, Suite 402 • Bridgeport, CT 06608  
phone: (917) 463 - 3941 • fax: (815) 642-8694  
web: <http://www.skillproof.com>