

SHORT TERM IT JOB TRENDS	Connecticut	●
	Massachusetts	●
	New York Metro	▼
	National	●

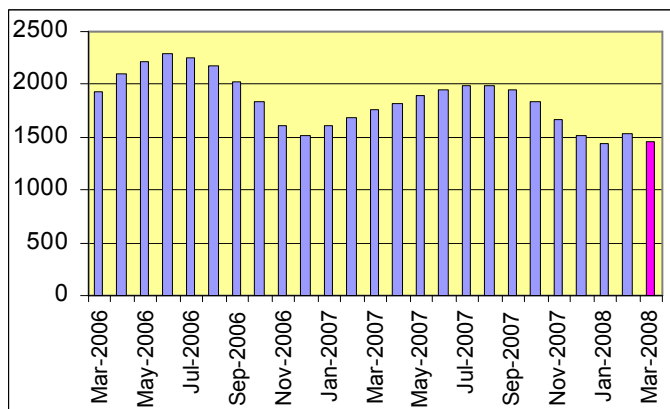
In March, employers in Connecticut cut back their opportunities for IT professionals. After a positive start in January and February, the IT job market now begins to feel the pinch. Employers posted 4.1% fewer job openings than in February and are offering now an estimated 1,400 opportunities. With this new development, it becomes less likely that employers in the state will increase their IT staff this year.

Table 1: IT Job Openings, Connecticut*

Mar 08	Feb 08	Jan 07	Mar 07	Mar 06
1,400	1,460	1,380	1,670	2,030

In the New York Metro area, employers slightly reduced their need for IT professionals (down 0.5%) after the first month of growth in February. Even though the IT job market in the city is not growing, it may have reached the bottom after eleven months of decline. The national IT job market declined 0.6% in March.

Fig.1: IT Open Positions, Connecticut



Demand for all major job categories declined, led by jobs in Software Development (down 11.1%) followed by IT Management (down 5.0%). Demand for IT Architects / Consultants grew 5.0% while demand for specialists in Business Process / Design picked up by 11.0%.

Table 2: IT Job Opening Estimates by Category*

	Mar 08	Mar 07
Total IT Job Market	1400	1670
IT Management	380	370
Systems Eng./Support	330	450
Software Development	240	310
IT Architects/Consultants	210	230
Business/Process Design	100	120
IT Sales and Marketing	50	50
Systems Administration	50	90
Training/Tech Writing	20	20
Misc.IT Job Categories	10	30

Table 3: Top 15 Needed Skills (Job Openings*)

	Mar 08	Mar 07
Business Analysis	370	420
SQL	340	410
Large system technologies	290	260
Oracle DBMS	260	270
Unix	220	270
Windows OS	200	240
Java	190	240
Microsoft SQL Server	150	160
Mainframe	140	140
DB2 (IBM)	130	140
Offshore team coordination	110	80
XML	110	120
Linux	110	70
VB/VB.NET	110	130
OO (analysis / design / programming)	80	110

* Estimated monthly averages are based on actual count of job openings.

METHODOLOGY
SkillPROOF surveys the inventories of job openings at large, regional and nationwide direct employers. Job openings are counted and verified every 24 hours. All data sources have been verified for timely removal of filled or closed positions. No data from job boards or search firms are included.
For this report SkillPROOF estimates the counts of job openings. Estimates are calculated directly from SkillPROOF's actual daily counts of job openings. As a base for its calculations, SkillPROOF uses data and findings from reports of the Bureau of Labor Statistics (BLS) <http://www.bls.gov>.

CT Technology Council
222 Pitkin St., Suite 113
East Hartford, CT 06108
phone: (860) 289 - 0878
web: <http://www.ct.org>

HARVEY NASH
The Power of Talent
Harvey Nash
1 Corporate Drive, Suite 522
Shelton, CT 06484
phone: (203) 225 - 0544
web: <http://www.harveynash.com>

SkillPROOF Inc.
510 Barnum Ave, Suite 402 • Bridgeport, CT 06608
phone: (917) 463 - 3941 • fax: (815) 642-8694
web: <http://www.skillproof.com>