

SHORT TERM IT JOB TRENDS	Connecticut	●
	Massachusetts	●
	New York Metro	●
	National	▲

Technology workers in Connecticut are not better off than other occupations during these difficult times. The IT job market in the state remains flat after some promising growth at the beginning of the year. Employers posted a few more opportunities (up 4.3%) in September, only to recover from the drop in August. This is in stark contrast to stocks rallying in September where the market posted its best result since 1939. The underlying news was that the economy is growing, but slowly.

Table 1: IT Job Openings, Connecticut*

Sep 10	Aug 10	Jul 10	Sep 09	Sep 08
980	940	980	610	990

The IT job market in the New York Metro area reversed its course after strong growth in the first half of this year. The area lost 2.4% of its volume compared to August. Job seekers in Massachusetts were disappointed, too. The job market there did not move into either direction.

At the national level the average number of job opportunities kept rising, ending 4% higher than in August.

Fig.1: IT Open Positions, Connecticut*

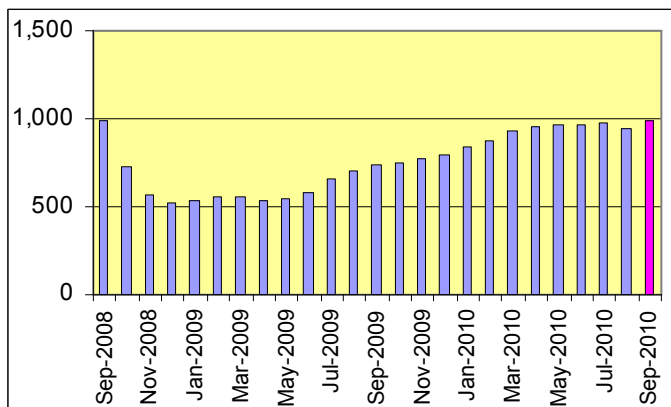


Table 2: IT Job Opening Estimates by Category*

	Sep 10	Sep 09
Total IT Job Market	980	610
IT Management	260	110
Software Development	210	120
Systems Eng./Support	200	100
IT Architects/Consultants	150	150
IT Sales and Marketing	60	30
Business/Process Design	50	40
Systems Administration	30	50
Training/Tech Writing	10	0
Hardware Engineering	0	10
Misc.IT Job Categories	20	0

Table 3: Top 15 Needed Skills (Job Openings*)

	Sep 10	Sep 09
Business Analysis	240	160
SQL	220	150
Java	200	110
Oracle DBMS	170	130
Large system technologies	150	150
Unix	140	90
Windows OS	140	80
Linux	120	50
C++/VC++	110	100
Offshore team coordination	100	30
XML	90	60
Microsoft SQL Server	80	60
Web Services	80	60
C#	70	20
HTML	60	10



CT Technology Council
222 Pitkin St., Suite 113 East Hartford, CT 06108
phone: (860) 289 - 0878
web: <http://www.ct.org>

*) Estimated monthly averages are based on actual count of job openings. Technology skill estimates have been revised.

METHODOLOGY
SkillPROOF surveys the inventories of job openings at large, regional and nationwide direct employers. Job openings are counted and verified every 24 hours. All data sources have been verified for timely removal of filled or closed positions. No data from job boards or search firms are included.
For this report SkillPROOF estimates the counts of job openings. Estimates are calculated directly from SkillPROOF's actual daily counts of job openings. As a base for its calculations, SkillPROOF uses data and findings from reports of the Bureau of Labor Statistics (BLS) <http://www.bls.gov>.

SkillPROOF™ The Future of Talent Management
SkillPROOF Inc.
510 Barnum Ave, Suite 402 • Bridgeport, CT 06608
phone: (917) 463 - 3941 • fax: (815) 642-8694
web: <http://www.skillproof.com>