

<b>SHORT TERM IT JOB TRENDS</b>	<b>Connecticut</b>	●
	<b>Massachusetts</b>	●
	<b>New York Metro</b>	▼
	<b>National</b>	●

Demand for IT workers in Connecticut dropped again last month indicating less interest by employers to add additional staff to their payrolls. The number of job opportunities declined 3.1%

compared to September wiping out that month's uptick of the job market. Much of the current stagnation may be blamed on the run up to the mid-term elections which left employers undecided about the direction of the economy and their prospects to hold on to new hires. All industries posted fewer openings except IT Services.

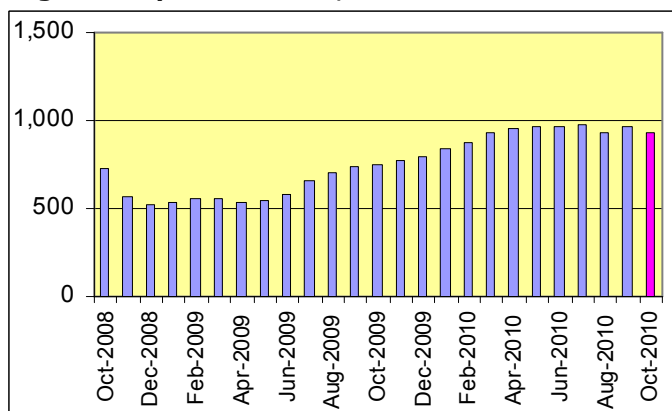
**Table 1: IT Job Openings, Connecticut\***

Oct 10	Sep 10	Aug 10	Oct 09	Oct 08
950	980	940	560	660

If the job market in the New York Metro Area is an indicator about future trends for IT labor in Connecticut then there is more bad news on the horizon. Employers in the city reduced their IT job postings for the second month in a row (down 3.9%) suggesting the outset of a negative trend.

There was little movement at the national level. The average rose 1.0% reflecting the current uncertainty about the economy.

**Fig.1: IT Open Positions, Connecticut\***



**Table 2: IT Job Opening Estimates by Category\***

	Oct 10	Oct 09
Total IT Job Market	950	560
IT Management	270	110
Software Development	180	120
Systems Eng./Support	170	90
IT Architects/Consultants	160	140
IT Sales and Marketing	60	30
Business/Process Design	40	30
Systems Administration	30	40
Training/Tech Writing	10	0
Hardware Engineering	0	0
Misc.IT Job Categories	20	0

**Table 3: Top 15 Needed Skills (Job Openings\*)**

	Oct 10	Oct 09
Business Analysis	230	150
Java	180	110
SQL	170	150
Unix	140	80
Oracle DBMS	140	110
Large system technologies	140	140
C++/VC++	130	100
Windows OS	120	100
Offshore team coordination	90	30
Linux	90	50
XML	80	60
Web Services	70	50
Microsoft SQL Server	70	100
DB2 (IBM)	50	60
C#	50	30

\*) Estimated monthly averages are based on actual count of job openings. Technology skill estimates have been revised.

**METHODOLOGY**

SkillPROOF surveys the inventories of job openings at large, regional and nationwide direct employers. Job openings are counted and verified every 24 hours. All data sources have been verified for timely removal of filled or closed positions. No data from job boards or search firms are included.

For this report SkillPROOF estimates the counts of job openings. Estimates are calculated directly from SkillPROOF's actual daily counts of job openings. As a base for its calculations, SkillPROOF uses data and findings from reports of the Bureau of Labor Statistics (BLS) <http://www.bls.gov>.



**CT Technology Council**  
222 Pitkin St., Suite 113 East Hartford, CT 06108  
phone: (860) 289 - 0878  
web: <http://www.ct.org>



**SkillPROOF Inc.**  
510 Barnum Ave, Suite 402 • Bridgeport, CT 06608  
phone: (917) 463 - 3941 • fax: (815) 642-8694  
web: <http://www.skillproof.com>