

SHORT TERM IT JOB TRENDS	Connecticut	○
	Massachusetts	▲
	New York Metro	▼
	National	▲

The year 2010 ended for job seekers without fanfare. In December, employers removed outdated job postings but did not post replacements. This left the job market with 4.7% fewer job

opportunities than in November. Nevertheless we believe that employers will be more active in the 2011 job market than in 2010. The successful holiday shopping season, the slow but steady growth of payroll as well and a stream of other good economic news leave us to believe that 2011 will bring more relief for job seekers.

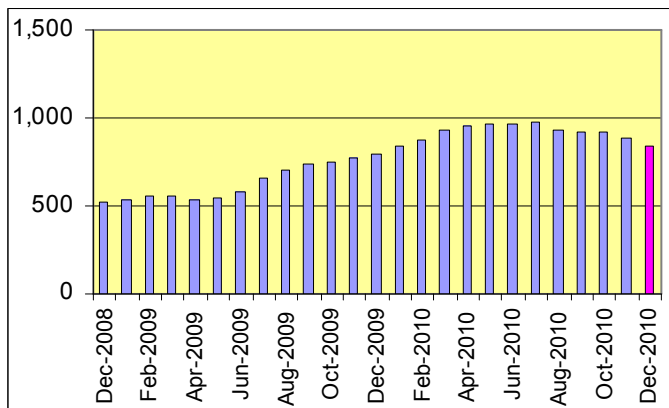
All industries posted less demand except for Healthcare.

Table 1: IT Job Openings, Connecticut*

Dec 10	Nov 10	Oct 10	Dec 09	Dec 08
820	860	950	530	510

Other job markets in the area declined as well. In the New York Metro area employers posted 1.7% fewer opportunities while in Massachusetts job seekers found 3.3% fewer postings. The national average remained unchanged.

Fig.1: IT Open Positions, Connecticut*



Demand grew for some occupations in Connecticut. Postings increased for Software Development (up 15.4%) and IT Architects/Consultants (up 6.7%).

*) Estimated monthly averages are based on actual count of job openings.

Table 2: IT Job Opening Estimates by Category*

	Dec 10	Dec 09
Total IT Job Market	820	530
IT Management	240	100
IT Architects/Consultants	160	100
Software Development	150	120
Systems Eng./Support	130	90
IT Sales and Marketing	50	40
Business/Process Design	40	40
Systems Administration	40	50
Training/Tech Writing	10	10
Misc.IT Job Categories	10	0

Table 3: Top 15 Needed Skills (Job Openings*)

	Dec 10	Dec 09
Business Analysis	210	150
Java	170	90
SQL	160	110
Oracle DBMS	150	90
Large system technologies	130	110
C++/VC++	110	100
Unix	100	80
Windows OS	100	100
Offshore team coordination	80	40
XML	70	30
Microsoft SQL Server	70	70
Linux	70	30
Web Services	70	30
Mainframe	60	60
PMP Certification	50	10



CT Technology Council
222 Pitkin St., Suite 113 East Hartford, CT 06108
phone: (860) 289 - 0878
web: <http://www.ct.org>

METHODOLOGY

SkillPROOF surveys the inventories of job openings at large, regional and nationwide direct employers. Job openings are counted and verified every 24 hours. All data sources have been verified for timely removal of filled or closed positions. No data from job boards or search firms are included.

For this report SkillPROOF estimates the counts of job openings. Estimates are calculated directly from SkillPROOF's actual daily counts of job openings. As a base for its calculations, SkillPROOF uses data and findings from reports of the Bureau of Labor Statistics (BLS) <http://www.bls.gov>.



SkillPROOF Inc.
510 Barnum Ave, Suite 402 • Bridgeport, CT 06608
phone: (917) 463 - 3941 • fax: (815) 642-8694
web: <http://www.skillproof.com>