

SHORT TERM IT JOB TRENDS	Connecticut ↑
	Massachusetts ↑
	New York Metro ↑
	National ↑

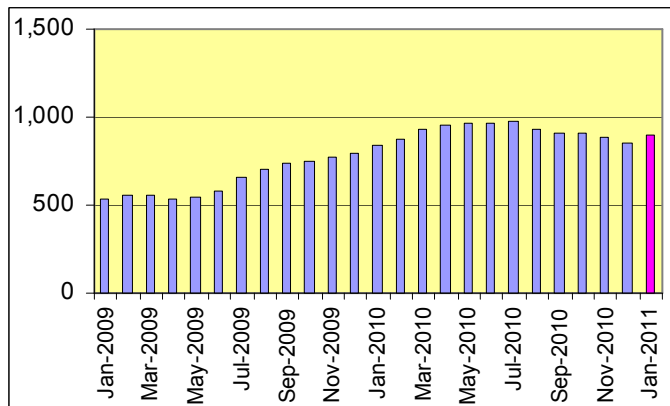
Employers in Connecticut showed more interest in technology workers in January. The year began with a 3.7% increase in job opportunities supporting optimism which had been voiced by economists and news outlets in December. While there is no reason to celebrate yet, the development in January was another positive sign. Employers in Financial Services, HiTech and IT Services stepped up demand.

Table 1: IT Job Openings, Connecticut*

Jan 11	Dec 10	Nov 10	Jan 10	Jan 09
850	820	860	470	520

In Massachusetts job openings increased 6.2% and in the New York Metro area 5.7%. These increases are more in line with our expectations for the season than the development of the IT labor market in Connecticut. We expect demand to pick up further in February. All local IT labor markets grew above the national average with gained 2.2% in January.

Fig. 1: IT Open Positions, Connecticut*



While job openings for IT Management declined in January (down 4.2%) demand for other occupations increased. Software Development gained the most (up 13.3%) followed by Systems Engineering / Support (up 7.7%) and IT Architects / Consultants (up 6.3%).

*) Estimated monthly averages are based on actual count of job openings.

Table 2: IT Job Opening Estimates by Category*

	Jan 11	Jan 10
Total IT Job Market	850	470
IT Management	230	90
Software Development	170	130
IT Architects/Consultants	170	80
Systems Eng./Support	140	80
Systems Administration	50	30
IT Sales and Marketing	40	20
Business/Process Design	40	30
Training/Tech Writing	0	10
Misc.IT Job Categories	10	0

Table 3: Top 15 Needed Skills (Job Openings*)

	Jan 11	Jan 10
Business Analysis	210	130
SQL	160	110
Java	150	90
Large system technologies	140	110
Oracle DBMS	130	70
Windows OS	110	80
C++/VC++	90	90
Unix	90	70
Linux	80	30
Offshore team coordination	80	40
XML	70	30
Microsoft SQL Server	70	70
Web Services	70	30
HTML	60	20
Mainframe	60	60



CT Technology Council
222 Pitkin St., Suite 113 East Hartford, CT 06108
phone: (860) 289 - 0878
web: <http://www.ct.org>

METHODOLOGY

SkillPROOF surveys the inventories of job openings at large, regional and nationwide direct employers. Job openings are counted and verified every 24 hours. All data sources have been verified for timely removal of filled or closed positions. No data from job boards or search firms are included.

For this report SkillPROOF estimates the counts of job openings. Estimates are calculated directly from SkillPROOF's actual daily counts of job openings. As a base for its calculations, SkillPROOF uses data and findings from reports of the Bureau of Labor Statistics (BLS) <http://www.bls.gov>.



SkillPROOF Inc.
510 Barnum Ave, Suite 402 • Bridgeport, CT 06608
phone: (917) 463 - 3941 • fax: (815) 642-8694
web: <http://www.skillproof.com>